

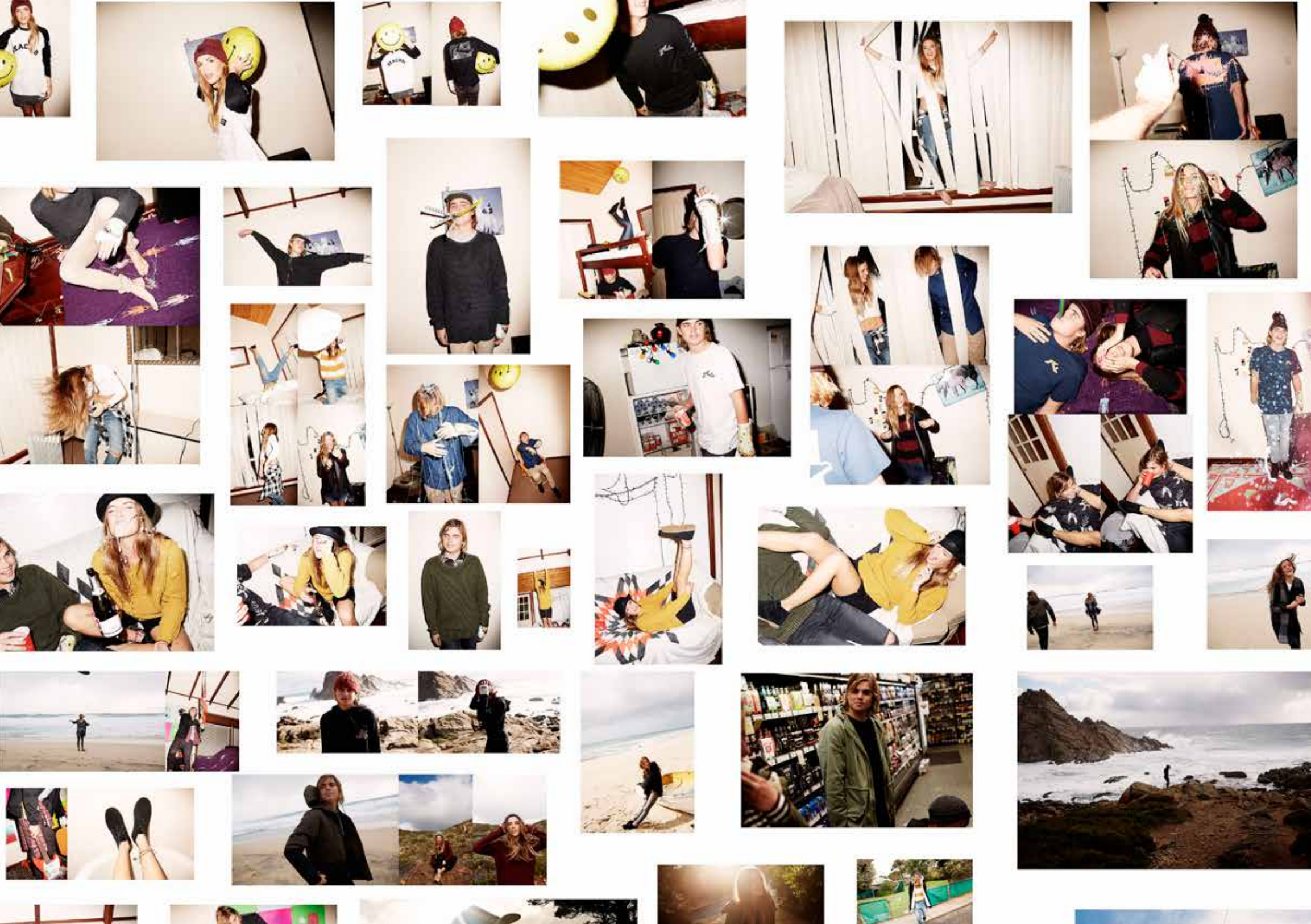
RUSTY LADIES EU WINTER 2015 COLLECTION

---

NAME	ACCOUNT	ORDER DEADLINE
------	---------	----------------

OUR KIND





# CONTENTS

---

6	DENIM	20	CAPS / HATS
8	PANTS	22	WALLETS
9	TOPS	22	BAGS
13	FLEECE	24	BELTS
16	KNITWEAR	26	INDEX
19	JACKETS		





**O L I V E**



**C O O K E**

IS OUR KIND







OLIVE WEARS BASEMENT CREW KNIT, TOMBOY BCH PANT SNL, OCEAN ROAD JKT

Rusty believes in surfboards that feel alive and clothes that reflect our kind of lifestyle. With pants and denim as the cornerstone of our brand, Rusty merges classic looks with a modern design aesthetic to create modern classics that can be worn by anyone, anytime.



## ELASTIC DUMPSTER FIT

The Elastic Dumpster Beach Pant Cut Is Designed As A Super Slouchy Fit. Styling Features Include An Elastic Waist With An External Draw Cord And Elasticized Cuffs At The Ankles. Wear Full Length Or Pulled Up Mid Calf.

- **WAIST FULL: 79 CM / 31 IN**
- **KNEE FULL: 39 CM / 15 IN**
- **LEG OPENING FULL: 25 CM / 10 IN**
- **OUTSEAM: 97 CM / 39 IN**

## DUMPSTER FIT

The Dumpster Cut Is Design To Sit On The Hip. The Dumpster Deatures A Longer Rise Tapering To A Skinny Leg Opening. An Invisible Zip At The Ankle Makes Them Easy To Pull On And Off.

- **WAIST FULL: 80 CM / 31.5 IN**
- **INSEAM: 67.5 CM / 26.5 IN**
- **KNEE FULL: 34 CM / 13 IN**
- **LEG OPENING FULL: 25 CM / 10 IN**

## SPRAY ON FIT

The Spray On Cut Is Our Skinniest Fit In Super Stretch Fabrics That Allow Movement And Comfort While Being Worn Skin Tight.

- **WAIST FULL: 75 CM / 29.5 IN**
- **INSEAM: 80 CM / 31.5 IN**
- **KNEE FULL: 31 CM / 12 IN**
- **LEG OPENING FULL: 24.5 CM / 9.5 IN**

# TOMBOY BCH PANT - SNL

PAL0873

Stretch Denim 8.25oz

Dumpster Fit w/ Elasticated Cuffs and Waist

# DUMPSTER - ATN

PAL0863

Stretch Denim 12oz

Dumpster Fit

# DUMPSTER - EDD

PAL0825

Stretch Denim 13.35oz

Dumpster Fit



STONE BLUE

ATLANTIC

EDDISON BLUE



	6	8	10	12	14
SNL					

	6	8	9	10	11	12	14
ATN							

	6	8	9	10	11	12	14
EDD							



## SPRAY ON - IND

PAL0813

Super Stretch Denim 7oz

Spray On Fit



INDIGO



	6	8	9	10	11	12	14
IND							

## SPRAY ON - BLK

PAL0741

Super Stretch Denim 6.25oz

Spray On Fit



BLACK



	6	8	9	10	11	12	14
BLK							

# HOOKY PANT

PAL0868

Cotton / Spandex Stretch Twill W/ Peach Finish

Dumpster Fit Pant W/ Elasticated Cuffs & Wb

# CADET PANT

PAL0735

Cotton Canvas 7oz

Straighty 180 Fit W/ Heavy Stone & Enzyme Wash



BLACK

ARMY



	6	8	10	12	14
BLK					
ARM					



ARMY

	6	8	10	12	14
ARM					
PEW					



PEWTER



## BLANK ROLLED TEE

TTL0759

- Cotton Slub Jersey - Light Weight
- Relaxed Fit Tee W/ Rolled Sleeves

	6	8	10	12	14
GMA					
BLK					
WHT					



GREY MARBLE

BLACK

WHITE

back view

## BLANK 3/4 SLEEVE TEE

TTL0765

- Cotton Slub Jersey - Light Weight
- Oversized 3/4 Tee W/ Scoop Back

	6	8	10	12	14
GMA					
BLK					
WHT					



GREY MARBLE

BLACK

WHITE

back view

## BROKEN TEE

TTL0787

- Cotton Jersey - Light Weight
- Oversized Tee W/ Rolled Sleeves & Rusty Print

	6	8	10	12	14
BLK					
WHT					



BLACK

WHITE

back view

## MOON LIGHT L/S TEE

TTL0786

- Cotton Jersey - Light Weight
- Regular Raglan Fit W/ Front & Back Rusty Print

	6	8	10	12	14
WTR					



WHITE TROP

back view

## FINE LINES TEE

TTL0778

- Cotton Jersey - Mid Weight
- Regular Fit Tee W/ Shoulder Panel Detail & Frt & Bk Rusty Print

	6	8	10	12	14
COA					
PRY					



COAL

PORT ROYAL

## TOUR TEE

TTL0784

- Cotton Jersey Yarn Dye - Mid Weight
- Tee W/ Stripe Mix Up

	6	8	10	12	14
BLK					
CRM					



BLACK

CREAM

back view

## TOUR L/S TOP

MWL0176

- Cotton Jersey Yarn Dye - Mid Weight
- Drop Armhole Crew W/ Stripe Mix Up

	6	8	10	12	14
BLK					
CRM					



BLACK

CREAM

back view



OLIVE WEARS DUMPSTER ATN, CHECK IT L/S SHIRT

## ROARING DRESS

**DRL0753**

- Rayon Poplin & Cotton/ Poly Jersey
- Tee Dress W/ Contrast Panels

	6	8	10	12	14
CRM					



CREAM

back view

## ROARING SHIRT

**WSL0444**

- Rayon Poplin & Cotton/ Poly Jersey
- 3/4 Sleeve Shirt W/ Contrast Panels

	6	8	10	12	14
CRM					



CREAM

back view

## CHECK IT L/S SHIRT

**WSL0448**

- Cotton Brushed Flannel Yarn Dye
- Button Down Raglan Shirt

	6	8	10	12	14
PEW					



PEWTER

back view

## CHECK IT TOP

**MWL0178**

- Cotton Jersey - Mid-weight
- Crew W/ Printed Back & Spray Fade

	6	8	10	12	14
GMA					
BLK					



GREY MARLE

back view

BLACK

back view

## NEIGHBOUR HOOD

FTL0570

- Cotton/ Poly Sueded Brushed Fleece - Heavy Weight
- Regular Fit Hood W/ Rusty Yardage Print

	6	8	10	12	14
SNM					



SNOW MARLE

back view

## STATE HOOD

FTL0569

- Cotton/ Poly Brushed Fleece - Heavy Weight
- Regular Fit Hood W/ Rusty Print

	6	8	10	12	14
GMA					
WHT					



GREY MARLE

WHITE

back view

## NEIGHBOUR TRACKPANT

PAL0858

- Cotton/ Poly Sueded Brushed Fleece - Heavy Weight
- Fashion Fit Track Pant W/ Rusty Yardage Print

	6	8	10	12	14
BLK					
GMA					



BLACK

GREY MARLE

## STRIKE IT HOOD

FTL0571

- Poly/ Cotton Marle Brushed Fleece - Heavy Weight
- Regular Fit Hood W/ Rusty Foil Print Logo

	6	8	10	12	14
BKM					
WMA					



BLACK MARLE

WHITE MARLE

back view

## PINCH CAPE

FTL0577

- Cotton Quilting
- Cape W/ Hood & Vinyl Trim

	OSFM
BLK	



BLACK

back view

## QUEST FLACKET

FTL0549

- Cotton/ Poly Brushed Fleece W/ Knitted Slvs
- Trad Fit Zip Thru Hood W/ Removable Fur Trim

	6	8	10	12	14
PWT					



PEWTER MARLE

back view

## OUTSIDER HOOD

FTL0572

- Poly/ Cotton Booklet Fleece
- Oversized Fit Hood W/ Rusty Emb Logo

	6	8	10	12	14
BLK					
WHT					



BLACK

WHITE

back view





OLIVE WEARS PINCH CAPE

## DEVINE CREW KNIT

CKL0232

- Acrylic/ Cotton Yarn
- Loose Knit W/ Back Cable Detail

	6	8	10	12	14
CRM					
CSL					



CREAM

COASTAL MARLE

back view

## BASEMENT CREW KNIT

CKL0262

- Cotton Yarn
- Loose Fit Crew Knit W/ Stripe Detail

	6	8	10	12	14
BLK					



BLACK

back view

## MELTED CREW KNIT

CKL0266

- Acrylic/ Cotton Yarn
- Oversized Crew Knit W/ Rusty Leather Trim

	6	8	10	12	14
BLK					
CAK					



BLACK

CREAM/BLACK

back view

## WAY OUT CREW KNIT

CKL0269

- Acrylic/ Cotton Yarn
- Fashion Fit Knit W/ Contrast Panels

	6	8	10	12	14
BLK					



BLACK



OLIVE WEARS DEVINE CREW KNIT

OLIVE WEARS OCEAN ROAD JKT



**FREEZER COAT****JKL0309**

- Wool Blend Melton
- Mid Length Coat W/ Knitted Detail

	6	8	10	12	14
GMA					



GREY MARLE

back view

**PLANET PARKA****JKL0313**

- Cotton Twill & Vinyl
- Longer Length Jacket W/ Vinyl Trim

	6	8	10	12	14
GRV					



GRAVEL

back view

**OCEAN ROAD JKT****JKL0311**

- Cotton/ Spandex Stretch Twill
- Longer Length Jacket W/ Sherpa Lining

	6	8	10	12	14
BLK					



BLACK

back view

## FUDETTE HAT

HHL0324

- Cotton Twill
- Sherpa Lined Hat W/ Rusty Yardage Print



CREAM

back view

	OSFM
CRM	

## LUNA CAP

HCL0292

- Polyester / Wool
- Adjustable Fit Cap W/ Emb R. Logo



GREY MARLE

PEWTER MARLE

	OSFM
GMA	
PWT	

## CORPETTE CAP

HCL0052

- Cotton
- Adjustable Fit Cap W/ Emb R. Logo



FORMULA ONE

BLACK 1

	OSFM
FMO	
BK1	

## BAY BEANIE

HBL0051

- Soft Acrylic
- Chunky Knit Beanie



COAL

CREAM / COAL

	OSFM
COA	
CRC	

## SNUG SCARF

**MAL0106**

- Soft Acrylic
- Chunky Knit Scarf W/ Fringe Detail & Metal Badge

	FS
BLK	
CRM	



## ROARSOME BEANIE

**HBL0241**

- Nylon / Acrylic
- Leopard Knit Beanie W/ Reversible Stripe Pattern

	OSFM
BLK	

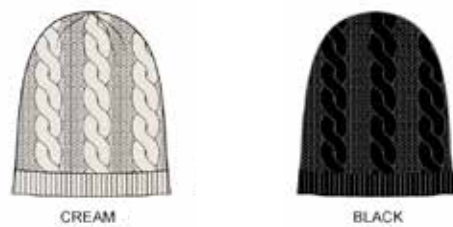


## BASEMENT BEANIE

**HBLO236**

- Soft Acrylic
- Cable Knit Beanie

	OSFM
CRM	
BLK	



## BASEMENT SCARF

**MAL0341**

- Acrylic
- Cable Knit Scarf

	FS
CRM	
BLK	



**MONEYBAGS WALLET****WAL0620**

- Leather
- W19cm, H13cm Bi-fold Wallet W/ Detachable Strap & Metal Logo Plate



BLACK

TAN

**TOP DECK WALLET****WAL0616**

- Vinyl
- W19cm, H10cm Bi-fold Zip Through Wallet W/ Quilted Vinyl & Contrast Hand-strap



BLACK

TAN

**RUBIX SIDEBAG****BFL0823**

- Vinyl
- W17cm, H15cm, D6cm Small Sidebag W/ Zip Through Opening & Pop Lining



BLACK

**RUBIX HANDBAG****BFL0828**

- Vinyl
- W32cm, H23cm, D23cm Medium Handbag W/ Detachable Shoulder Strap & Pop Lining



BLACK



## TOP DECK HANDBAG

**BFL0832**

- Vinyl
- W41cm, H34cm, D11cm Large Tote Style Bag W/ Pop Lining & Quilted Side Panels

	FS
BLK	
TAN	



BLACK

TAN

## GRAVITY SIDEBAG

**BFL0825**

- Vinyl
- W32cm, H24cm, D2cm Medium Fold Over Bag W/ Detachable Strap & Pop Lining

	FS
MID	
PEW	



MIDNIGHT

PEWTER

## GRAVITY HANDBAG

**BFL0831**

- Vinyl
- W48cm, H39cm, D10cm Large Convertible Bag W/ Detachable Strap & Pop Lining

	FS
MID	
PEW	



MIDNIGHT

PEWTER

**LUNA BELT****BEL0384**

- Vinyl
- Belt W/ Embossed Logo & Metal Trims

	S	M	L
BAH			
BLK			



BLACK STEALTH

BLACK

**SNEAKY BELT****BEL0148**

- Vinyl
- Single Prong Rusty Buckle W/ Embossing & Cut Out Detail

	S	M	L
BLK			
CHO			



BLACK

CHOCOLATE



OLIVE WEARS PINCH CAPE

## LADIES APPAREL

### DRESS

ROARING DRESS DRL0753 12

### FLEECE

NEIGHBOUR HOOD FTL0570 13

OUTSIDER HOOD FTL0572 14

PINCH CAPE FTL0577 14

QUEST FLACKET FTL0549 14

STATE HOOD FTL0569 13

STRIKE IT HOOD FTL0571 13

### JACKETS

FREEZER COAT JKL0309 19

OCEAN ROAD JKT JKL0311 19

PLANET PARKA JKL0313 19

### KNITWEAR

BASEMENT CREW KNIT CKL0262 16

DEVINE CREW KNIT CKL0232 16

MELTED CREW KNIT CKL0266 16

WAY OUT CREW KNIT CKL0269 16

### MIDWEIGHT

CHECK IT TOP MWL0178 12

TOUR L/S TOP MWL0176 10

### PANTS

CADET PANT PAL0735 8

DUMPSTER - ATN PAL0863 6

DUMPSTER - EDD PAL0825 6

HOOKY PANT PAL0868 8

NEIGHBOUR TRACKPANT PAL0858 13

SPRAY ON - BLK PAL0741 7

SPRAY ON - IND PAL0813 7

TOMBOY BCH PANT - SNL PAL0873 6

### SHIRTS

CHECK IT L/S SHIRT WSL0448 12

ROARING SHIRT WSL0444 12

### TEES

BLANK 3/4 SLEEVE TEE TTL0765 9

BLANK ROLLED TEE TTL0759 9

BROKEN TEE TTL0787 9

FINE LINES TEE TTL0778 10

MOON LIGHT L/S TEE TTL0786 10

TOUR TEE TTL0784 10

## LADIES ACCESSORIES

### BEANIE

BASEMENT BEANIE HBL0236 21

BAY BEANIE HBL0051 20

ROARSOME BEANIE HBL0241 21

### BELTS

LUNA BELT BEL0384 24

SNEAKY BELT BEL0148 24

### CAPS

CORPETTE CAP HCL0052 20

LUNA CAP HCL0292 20

### FASHION

GRAVITY HANDBAG BFL0831 23

GRAVITY SIDEBAG BFL0825 23

RUBIX HANDBAG BFL0828 22

RUBIX SIDEBAG BFL0823 22

TOP DECK HANDBAG BFL0832 23

### HATS

FUDETTE HAT HHL0324 20

### MISCELLANEOUS

BASEMENT SCARF MAL0341 21

SNUG SCARF MAL0106 21

### WALLETS

MONEYBAGS WALLET WAL0620 22

TOP DECK WALLET WAL0616 22

